

GENERAL FUND AREAS (#101.84.20)
(Shown in Red)

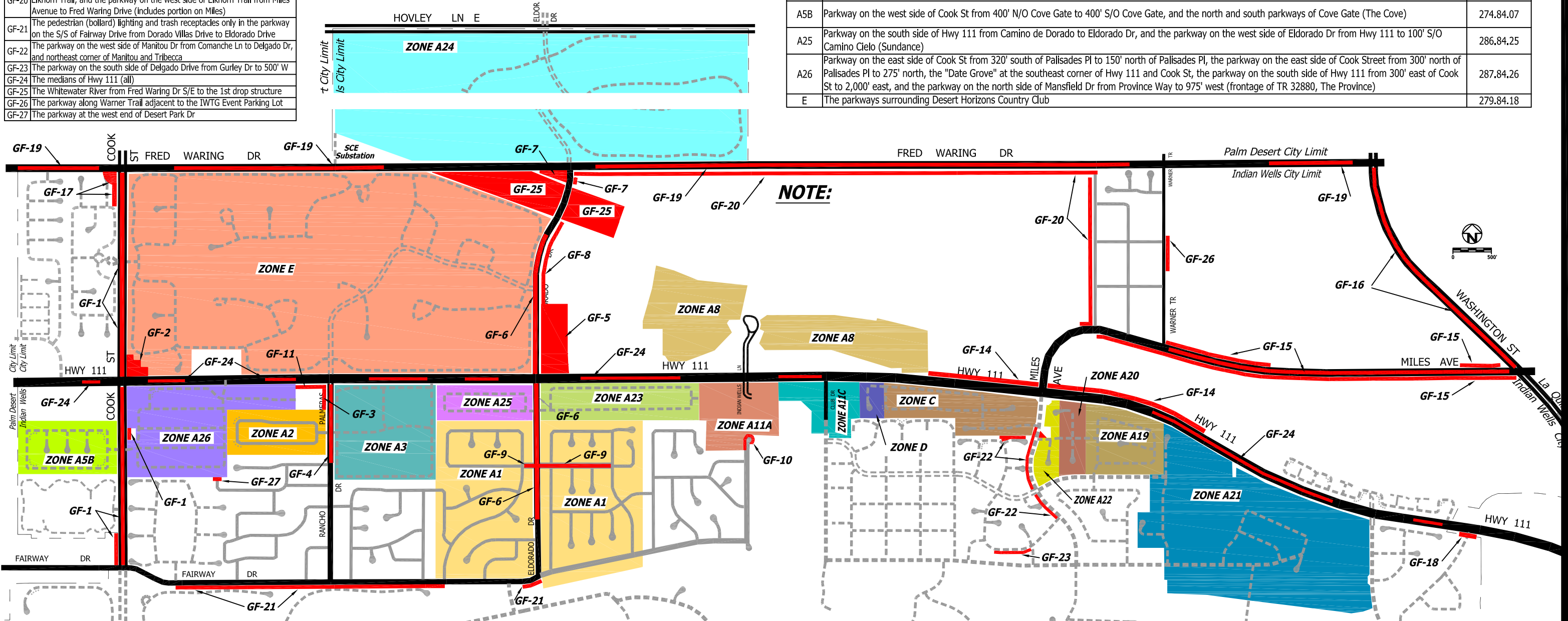
AREA	LOCATION/LIMITS OF FACILITIES (AREAS) MAINTAINED
GF-1	The medians of Cook St from Fairway Dr to Fred Waring Dr, the parkway on the west side of Cook St from Fairway Dr to 450' north, and the parkway on the east side of Cook St from 150' north of Palsades Pl to 300' north of Palsades Pl
GF-2	The northeast corner of Highway 111 and Cook St (Grove Gate)
GF-3	The parkway on the west side of Rancho Palmeras from Highway 111 to 275' north of Stardust Ln
GF-4	The medians of Rancho Palmeras Drive from Palm Shadow Drive to Hwy 111
GF-5	The Civic Center complex at the northeast corner of Highway 111 and Eldorado Dr
GF-6	The medians of Eldorado Drive from 200' N/O Altamira to the Whitewater River
GF-7	The S/W corner lot at Eldorado Drive and Fred Waring Drive, and the parkway on the E/S of Eldorado Drive from the Whitewater River to 155' N
GF-8	The prky on the E/S of Eldorado Dr from the Civic Center to the Whitewater River
GF-9	The medians of Osage Trail from Cielito Dr to Apache Tr
GF-10	The parkway on Indian Wells Ln north of Pala Palms Dr
GF-11	The parkway on the S/S of Hwy 111 from Rancho Palmeras Dr to 500' W
GF-14	The parkway on the N/S of Hwy 111 from 1,200' W/O Miles Ave to 2,200' W/O Miles Ave (includes parkway/bus shelter landscaping at N/W corner Miles/Hwy 111)
GF-15	The medians and select parkways of Miles Avenue from Elkhorn Tr to Washington St
GF-16	The median lighting of Washington St from Fred Waring to Miles Ave
GF-17	The parkway on the west side of Cook Street from Fred Waring to 430' south, and the "mini-park" at the southwest corner of Fred Waring and Cook St
GF-18	The parkway on the S/S of Hwy 111 between the Pedestrian Bridge
GF-19	The medians of Fred Waring Dr from Phyllis Jackson to Washington St (maint by Palm Desert)
GF-20	The parkway on the south side of Fred Waring Drive from Eldorado Drive to Elkhorn Trail, and the parkway on the west side of Elkhorn Trail from Miles Avenue to Fred Waring Drive (includes portion on Miles)
GF-21	The pedestrian (bollard) lighting and trash receptacles only in the parkway on the S/S of Fairway Drive from Dorado Villas Drive to Eldorado Drive
GF-22	The parkway on the west side of Manitou Dr from Comanche Ln to Delgado Dr, and northeast corner of Manitou and Tribecca
GF-23	The parkway on the south side of Delgado Drive from Gurley Dr to 500' W
GF-24	The medians of Hwy 111 (all)
GF-25	The Whitewater River from Fred Waring Dr S/E to the 1st drop structure
GF-26	The parkway along Warner Trail adjacent to the IWTG Event Parking Lot
GF-27	The parkway at the west end of Desert Park Dr



INDEX MAP

LANDSCAPE & LIGHTING MAINTENANCE DISTRICTS AND GENERAL FUND AREAS

April, 2015



LANDSCAPE & LIGHTING MAINTENANCE DISTRICTS (LLMD)

Color shading indicates limits of assessed parcels. Limits of facilities maintained within each LLMD are described below.

ZONE	LOCATION/LIMITS OF FACILITIES (AREAS) MAINTAINED	ACCT. CODE
A1	Parkway on west side of Eldorado from 100' S/O Cam. Cielo to Altamira, and parkway on east side of Eldorado from 100' S/O Via Montelena to 150' N/O Fairway	271.84.01
A2	Parkway on west side of Rancho Palmeras from 250' N/O Stardust to 250' S/O Stardust, north and south parkways of Stardust from Rancho Palmeras to 100' west, and the 220' long westerly parkway of Stardust/Montecito	272.84.02
A8	Parkway on north side of Hwy 111 from 300' E/O Eldorado to 2,500' E/O Indian Wells Ln (end of SW), and both parkways and the median of Indian Wells Ln from Hwy 111 to 600' north (beginning of roundabout)	275.84.08
A11A	Parkway on south side of Hwy 111 from Indian Wells Ln to Club Dr	276.84.11
A11C	Parkways on both the east and west sides of Club Dr from Hwy 111 to 60' north of guard house	284.84.13
A19	Parkway on south side of Hwy 111 from 500' E/O Manitou to 1,600' E/O Manitou (frontage of Tr 26595, Mt Gate)	280.84.19
A20	Parkway on south side of Hwy 111 from 180' E/O Manitou to 500' E/O Manitou (frontage of TR 27747-1, Mt Gate Estates)	281.84.21
A21	Parkway on south side of Hwy 111 from 1,600' E/O Manitou to Mt Cove Dr (frontage of TR 29502, Villaggio)	282.84.22
A22	Parkway on south side of Hwy 111 from Manitou to 180' east (frontage of TR 27747, The Estates)	283.84.23
A23	Parkway on south side of Hwy 111 from Eldorado to 2,000' east, and parkway on east side of Eldorado from Hwy 111 to 30' N/O Via Montelena (frontage of TR 31200, Montelena)	285.84.24
A24	Parkway on north side of Fred Waring from Whitewater River to 100' west of California, the parkway on the south side of Hovley from 2,600' west of Eldorado to 2,600' east of Eldorado, and the Whitewater River ROW from the westerly city limits to Fred Waring (frontage of TR 29663, Toscana; maintained by HOA)	-
C	Parkway on the south side of Hwy 111 from Manitou to 1,950' west (frontage of TR 24625, Colony)	277.84.15
D	Parkway on the south side of Hwy 111 from 400' E/O Club Dr to 750' E/O Club Dr (frontage of PM 26494, Colony Estates)	278.84.17

ZONE	PASS-THROUGH LLMD'S	ACCT. CODE
A3	Parkway on the south side of Hwy 111 from Rancho Palmeras to Camino de Dorado (Casa Dorado)	273.84.03
A5B	Parkway on the west side of Cook St from 400' N/O Cove Gate to 400' S/O Cove Gate, and the north and south parkways of Cove Gate (The Cove)	274.84.07
A25	Parkway on the south side of Hwy 111 from Camino de Dorado to Eldorado Dr, and the parkway on the west side of Eldorado Dr from Hwy 111 to 100' S/O Camino Cielo (Sundance)	286.84.25
A26	Parkway on the east side of Cook St from 320' south of Palsades Pl to 150' north of Palsades Pl, the parkway on the east side of Cook Street from 300' north of Palsades Pl to 275' north, the "Date Grove" at the southeast corner of Hwy 111 and Cook St, the parkway on the south side of Hwy 111 from 300' east of Cook St to 2,000' east, and the parkway on the north side of Mansfield Dr from Province Way to 975' west (frontage of TR 32880, The Province)	287.84.26
E	The parkways surrounding Desert Horizons Country Club	279.84.18

NOTE: